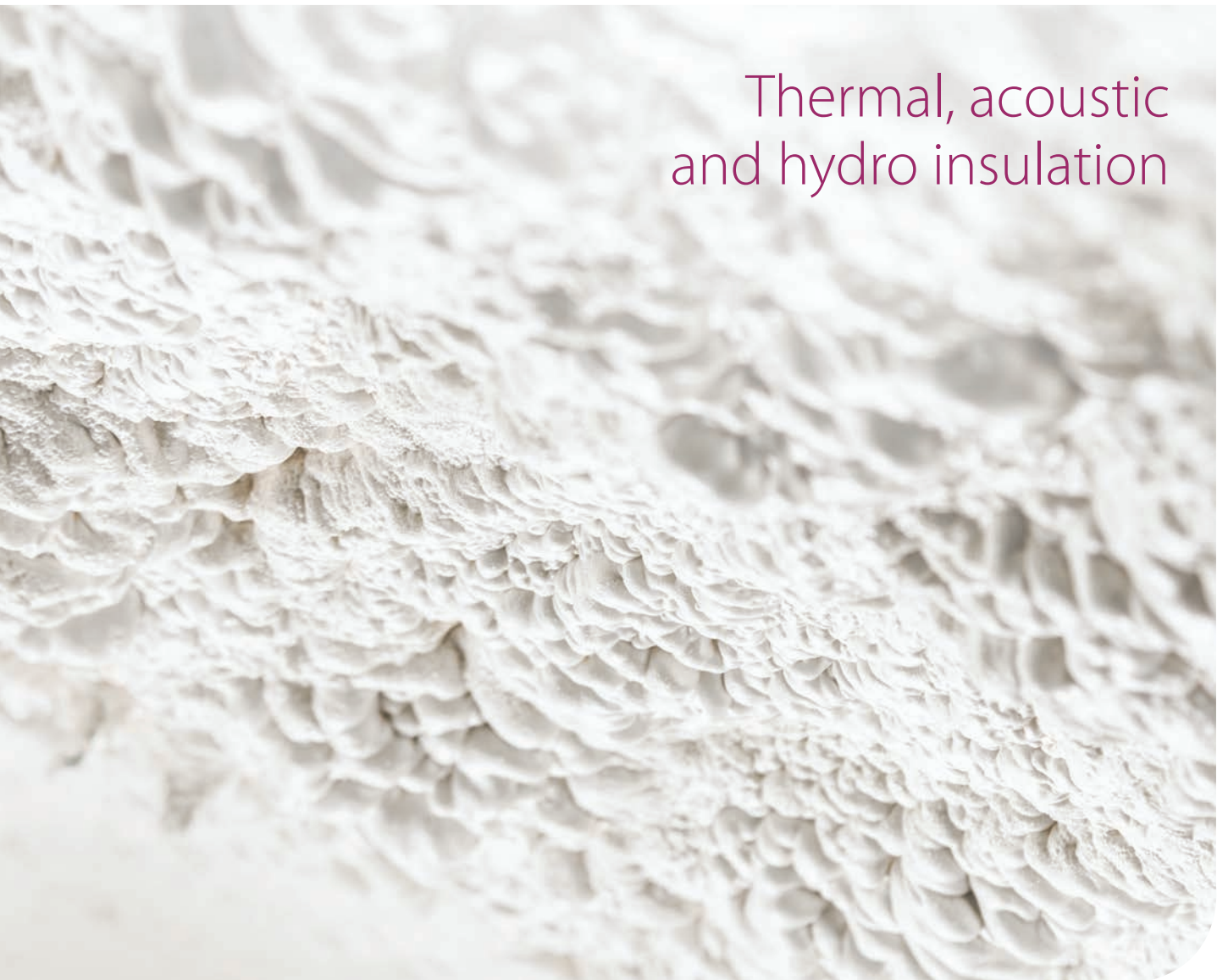


# Polyurethane spray insulation





## Thermal, acoustic and hydro insulation

## What makes our products unique?

Modern polyurethane (PU) spray foam systems are highly efficient, fast to complete and versatile in terms of application techniques. For PU spray foam systems special high-pressure units are being utilized in order to ensure that components are mixed thoroughly what in the end guarantees an accurate and efficient performance of insulation works.

The essential feature of PU spray foam systems is the product application technique on the insulated surfaces. The possibility of spraying the PU foam directly significantly reduces the time of carrying out the insulation work and improves its effectiveness and aesthetics. The polyurethane spray foam is designed for the purposes of jointless thermal, acoustic and hydro insulation.



# Applications



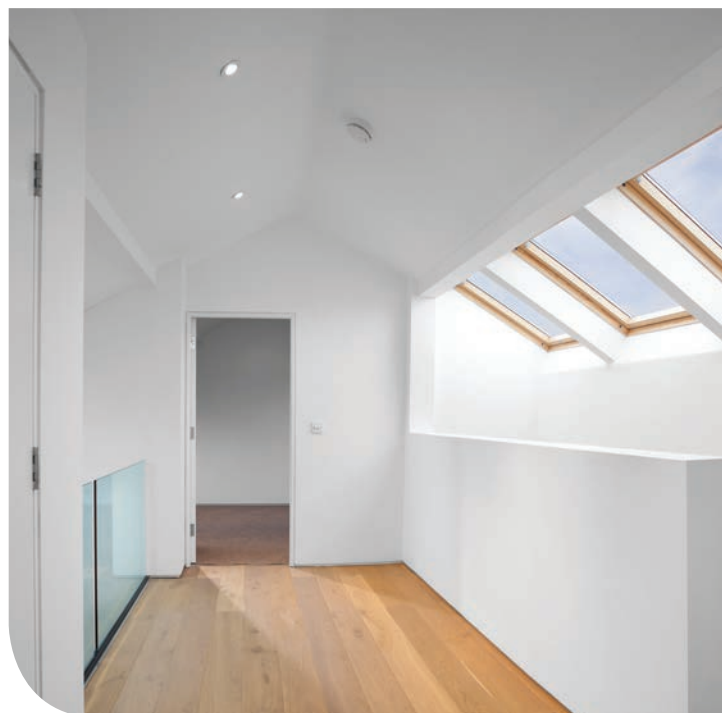
## • construction sector

external and internal insulation of roofs, walls and floors in both newly-built and existing buildings (renovation and thermal insulation); reinforcement of building surfaces with insulation providing enhanced mechanical strength



## • industry

insulation for such industrial facilities as warehouses, production halls and logistics centres; insulation for tanks and pipelines



## • agriculture

insulation and thermal insulation for warehouses, fruit and vegetable stores and farm buildings such as pig farms, stables, cow sheds and hen houses



## • public utility buildings

hotels, hospitals, schools, sports halls, offices, etc.

# Advantages of polyurethane spray foam insulations

fast and easy application  
regardless of the degree  
of surface complexity

one of the lowest thermal  
conductivity levels  
( $\lambda \leq 0.021 \text{ W/m}\cdot\text{K}$ )

jointless insulation means that there  
are no thermal bridges responsible  
for heat losses

excellent sealing  
parameters

very good adhesion to  
substrate made of various  
construction materials

extraordinary lightness and  
mechanical, chemical and biological  
resistance of the material

unchanging parameters

high efficiency (e.g. flat roof  
– even up to 1.000 sq. m a day)  
reduces the demand for labour  
and the involvement of facility users

resistance to  
mould and fungi

# Products

## Closed-cell PU spray foam:

- **FLOOR Foam**

internal thermal and hydro insulation for floors, foundations and floorings, with the yield of 0.5 kg per 1 sq. m of insulated surface, providing a 1 cm thick layer

- **WALL Foam**

internal wall insulation, with the yield of 0.38 kg per 1 sq. m of insulated surface, providing a 1 cm thick layer

- **ATTIC Hard Foam**

internal and external insulation for floors and ceilings, with the yield of 0.38 kg per 1 sq. m of insulated surface, providing a 1 cm thick layer

- **ROOF Foam**

external roof insulation providing enhanced strength, with the yield of 0.5 kg per 1 sq. m of insulated surface, providing a 1 cm thick layer

## Open-cell PU spray foam:

- **ATTIC Soft Foam**

lightweight internal insulation of attics, with the yield of 0.1 kg per 1 sq. m of insulated surface, providing a 1 cm thick layer

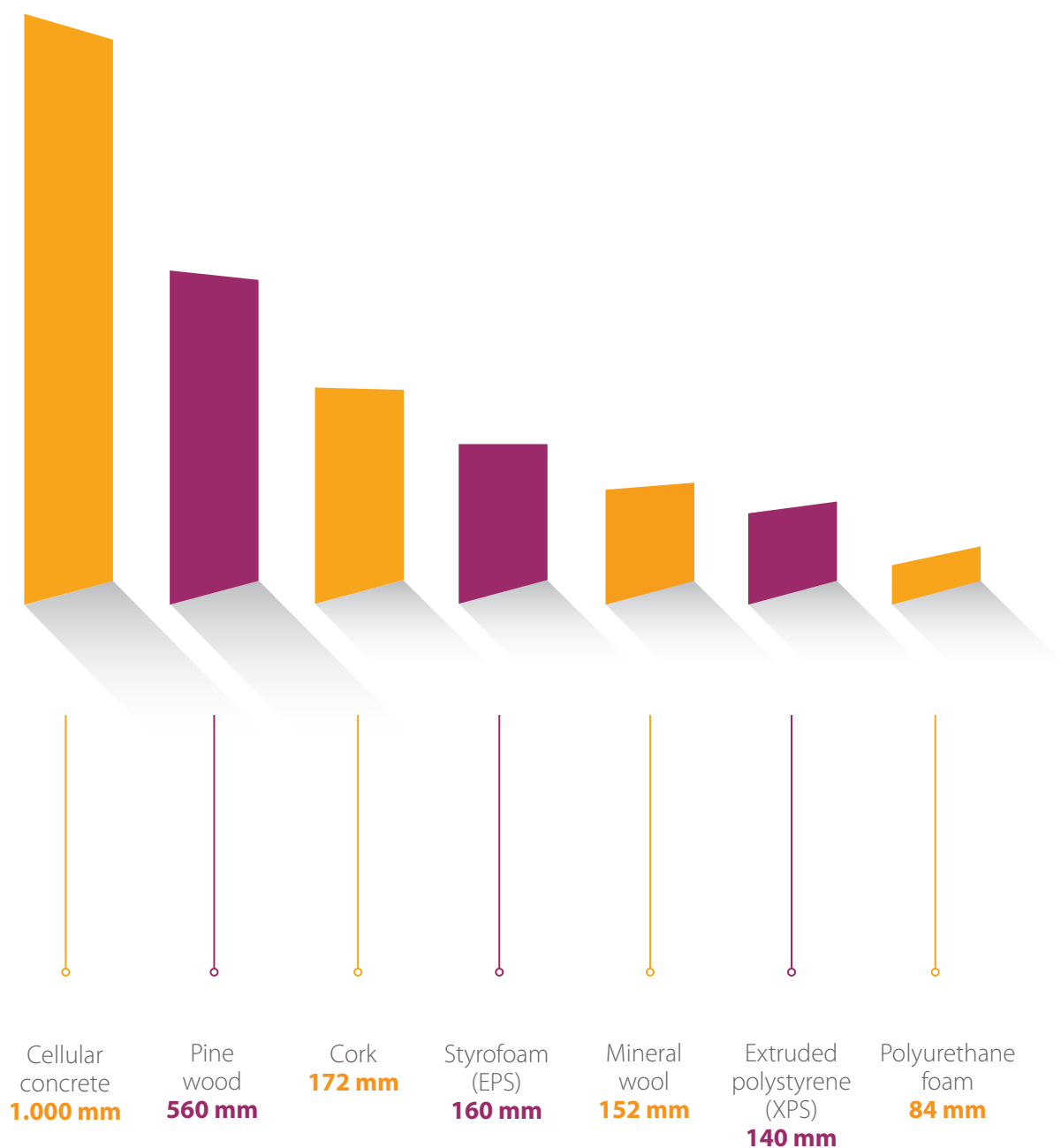




## Advantages

- time and money savings to the quick installation (even during one day)
- definite reduction in costs of heating (in winter) and cooling (in summer), owing to a good tightness and, thus, a high efficiency of building insulation
- durability of insulation under different weather conditions (temperature, wind, precipitation)
- material's versatility – one production stage delivers thermal and hydro insulation and the structure is mechanically strengthened without a significant load increase

Average thickness of an insulation layer  
at the heat transfer coefficient  
 $U=0.25 \text{ W}/(\text{m}^2\cdot\text{K})$  depending on the material type



Crossin Spray Insulation systems are high quality insulation systems that ensure comfort and safety for many years.





[www.crossin.pcc.eu](http://www.crossin.pcc.eu)

PCC Prodex Ltd.  
4, H. Sienkiewicza  
56-120 Brzeg Dolny, Poland  
T +48 665 000 888  
[crossin.spray@pcc.eu](mailto:crossin.spray@pcc.eu)  
[www.crossin.pcc.eu/](http://www.crossin.pcc.eu/)

 **crossin**<sup>®</sup>  
insulations