

# BioROKAMINA K30B

Coco Betaine

Greenline



pcc  
Exol

# BioROKAMINA K30B

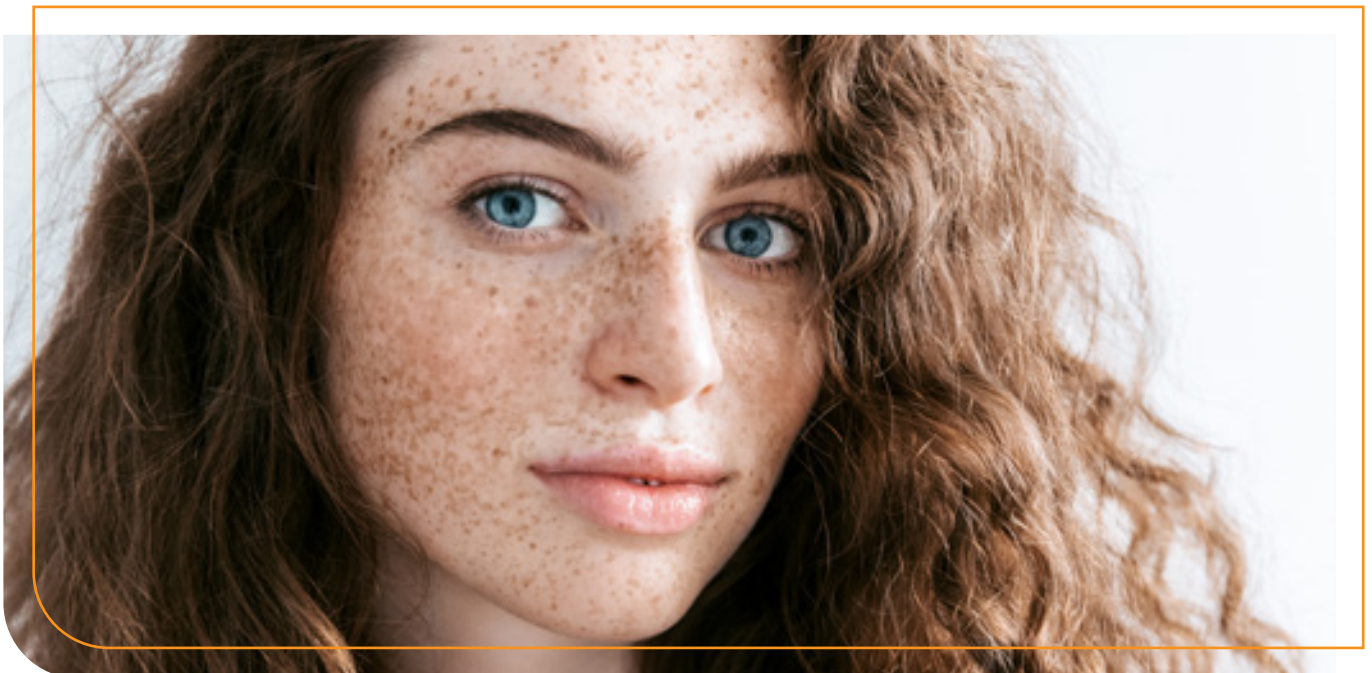


## Coco betaine

BioROKAMINA K30B is a very high purity, colourless amphoteric surfactant, with a content of about 30% of the active substance, belonging to the betaine group. This specific product is produced using a unique raw material of natural origin, which is a monochloroacetic acid called Greenline MCAA 80% UP Solution with the highest available purity. The raw material is based on natural acetic acid obtained in the fermentation process of plants. Thanks to the production with Greenline MCAA, the index of natural origin (in accordance with ISO 16128) of BioROKAMINA K30B is increased (manufacturer's declaration available on customer's request). Therefore, BioROKAMINA K30B is an ecological raw material, is more environmentally friendly, and can be used as an ingredient of natural cosmetic products with the highest index of natural origin. Another ingredient included in the composition of BioROKAMINA K30B is a derivative Palm Kernel Oil, otherwise known as African oil palm (*Elaeis guineensis* Jacq.). The high index of natural origin of this product, determined by its unique composition, means that it is very often used as a component of natural, ecological and vegan cosmetic formulations, for example, very mild washing preparations to remove impurities from the surface of the skin and hair of infants, children and adults.

BioROKAMINA K30B is a 100% ecological surfactant that is safe for people and the environment. This fact is confirmed by the prestigious international quality marks ECOCERT COSMOS. They are the most important and widely recognised certificates of the quality and environmental safety in Europe. Product verification by the ECOCERT experts thus confirms that BioROKAMINA K30B meets the very strict requirements specific to ecological products. In addition, the high biodegradability of this product makes it completely safe for the environment. It can be safely used in Eco, Organic, Vegan, Paraben Free and GMO Free products.

BioROKAMINA K30B version also available as RSPO Mass Balance (MB)



BioROKAMINA K30B is a natural amphoteric surfactant which, in combination with anionic surfactants of the SLS and SLES type, causes a synergistic increase in the volume of foam produced. In formulations, this product also significantly improves their stability. An important advantage of this BIO betaine is also a high level of stability in solutions with a high salinity content. These features significantly improve performance by reducing the use of surfactants in cosmetics and other products. In addition to all its advantages, BioROKAMINA K30B has a very good ability to smooth and soften hair and skin. It also alleviates the irritating effect of other ingredients on the skin, especially those from the group of anionic surfactants, which is very desirable in cleansing cosmetic formulations.

Since betaines belong to the compounds reducing static charges that often appear on the surface of the hair, BioROKAMINA K30B is also antistatic, preventing static electricity of the hair. In this way, it conditions, i.e. softens and smooths the hair. As a result, it becomes sleek, soft and gains a beautiful and well-groomed appearance. In addition, BioROKAMINA K30B also has excellent hydrotropic properties, i.e. those that improve the clarity of the finished cosmetic product, affecting its quality.

BioROKAMINA K30B is one of the most effective rheology modifiers of preparations containing anionic surfactants in the presence of electrolytes. It is also characterised by much better thickening properties in the presence of electrolytes in comparison to amphoteric surfactants from the cocamidopropyl betaine group. Compared to standard ingredients from the surfactant group, BioROKAMINA K30B, when used as a component of personal care products, significantly reduces the undesirable irritating and sensitising properties of the finished product. Due to its natural origin and very gentle action on the skin and hair, this surfactant is recommended as the main raw material for production of cosmetics dedicated to sensitive skin prone to irritation and allergies. BioROKAMINA K30B is also perfect for care products for children because it is safe and friendly to their delicate skin.

## Advantages of the product:

- 100% ecological (ECOCERT COSMOS certificate);
- product made from natural raw materials (palm kernel oil derivatives and the unique **Greenline MCAA 80% UP**),
- excellent foaming properties,
- produces dense and stable foam in cleansing cosmetics,
- reduces the irritating effect of other ingredients contained in cosmetic formulations,
- has a very mild effect on the skin,
- especially recommended as an ingredient in cosmetics for sensitive skin prone to allergies and irritations,
- recommended for the production of care cosmetics for children,
- very good thickening properties in a wide range of pH and water hardness levels,
- excellent thickening properties in the presence of electrolytes (even better than, for example, cocamidopropyl betaine containing a higher concentration of the active substance),
- has an antistatic effect,
- manufactured on installations certified with the federal GMP EFfCI certificate (Good Manufacturing Practices implemented in accordance with the European Federation for Cosmetic Ingredients standard).

# BioROKAMINA K30B

## Coco Betaine

### TECHNICAL REQUIREMENTS

Appearance at temperature (20±25)°C	light yellow liquid
Colour (Hazen units) at (20±25)°C	max 150 (ASTM D1209-05(2019), spectrophotometric method)
pH of 5% solution	6.0 ÷ 8.0 (PN-EN 1262:2004, solution B at 20°C)
Active substance, %(m/m)	9.0 ÷ 33.0 Calculated: 100% - (water % + chlorides calculated as NaCl %)
Water content, %(m/m)	60 ÷ 64 (PN-ISO 760:2001, external dissolution method)
Chlorides calculated as NaCl, %(m/m)	6.5 ÷ 7.5 (LA/2152)
Total alkalinity, (meq/m)	1.15 ÷ 1.30 (LA/2150)

### INFORMATIVE DATA\*

Solubility in water	infinite
Density at 25°C, g/mL	approx. 1.04
Solidification point, °C	below -10,0
Odour	weak, characteristic
Preservatives	none





# BioROKAMINA K30B MB

## Coco Betaine

### TECHNICAL REQUIREMENTS

Appearance at temperature (20±25)°C	light yellow liquid
Colour (Hazen units) at (20±25)°C	max 150 (ASTM D1209-05(2019), spectrophotometric method)
pH of 5% solution	6.0 ÷ 8.0 (PN-EN 1262:2004, solution B at 20°C)
Active substance, %(m/m)	29.0 ÷ 33.0 (Calculated: 100% - (water % + chlorides calculated as NaCl %))
Water content, %(m/m)	60 ÷ 64 (PN-ISO 760:2001, external dissolution method)
Chlorides calculated as NaCl, %(m/m)	6.5 ÷ 7.5 (LA/2152)
Total alkalinity, (meq/m)	1.15 ÷ 1.30 (LA/2150)

### INFORMATIVE DATA\*

Solubility in water	infinite
Density at 25°C, g/mL	approx. 1.04
Solidification point, °C	below -10.0
Odour	weak, characteristic
Preservatives	none

It can be safely used in Eco, Organic, Vegan, Paraben Free and GMO Free products.



## Applications



cosmetics for adults and children



shaving foams



shampoos (especially very mild shampoos for children and colouring shampoos)



bubble bath



gentle care cosmetics for children



hand soaps and shower gels



cosmetics for sensitive skin prone to irritation



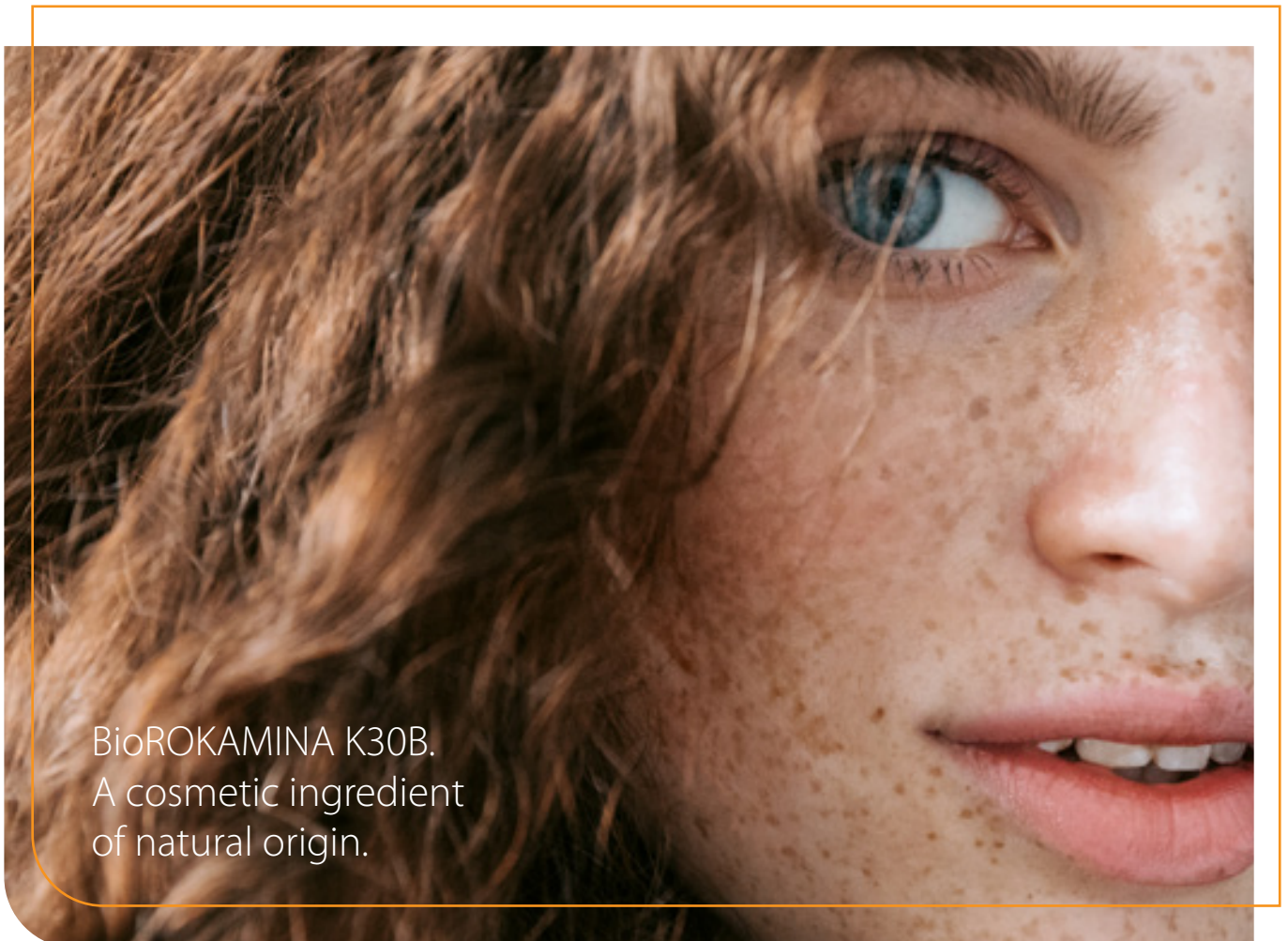
face cleansing products



hair conditioners



oral hygiene products



BioROKAMINA K30B.  
A cosmetic ingredient  
of natural origin.



These products are safe and friendly  
for baby delicate skin.

## LIQUID SOAP (KD-204)

Phase	INCI name	Brand name	Concentration [%]	Function
<b>A</b>	Aqua		up to 100	solvent
	Hydroxypropyl Methylcellulose		1.00	thickener
	Mica, CI 77891		0.10	colorant
	Maris Aqua		0.20	solvent/ activ
<b>B</b>	<b>Potassium Cocoate</b>	<b>EXOsoft PC35</b>	<b>8.00</b>	<b>surfactant</b>
<b>C</b>	<b>Coco Betaine</b>	<b>BioROKAMINA K30B</b>	<b>2.00</b>	<b>surfactant</b>
	Parfum		q.s.	fragrance

**APPEARANCE**  
**pH**

visual method

white liquid  
11.0 – 11.5



1. In a main vessel combine ingredients from phase A. Mix until uniform.
2. Add EXOsoft PC35 while mixing. Mix until uniform.
3. Add slowly BioROKAMINA K30B and Parfum while mixing. Mix until uniform.



## GEL FOR INTIMATE HYGIENE (KD-208)

Phase	INCI name	Brand name	Concentration [%]	Function
<b>A</b>	Aqua		to 100.00	solvent
	Sodium Benzoate, Potassium Sorbate		0.50	preservative
	Betaine		2.00	active
	Glycerin		1.00	moisturising agent
	Lactic Acid		0.70	active/ pH adjuster
	Sodium Chloride		0.40	thickener
<b>B</b>	<b>Sodium Lauryl Sulfate</b>	<b>ROSULfan L/PH</b>	<b>18.00</b>	<b>surfactant</b>
<b>C</b>	<b>Coco Betaine</b>	<b>BioROKAMINA K30B</b>	<b>10.00</b>	<b>surfactant</b>

<b>APPEARANCE</b>	visual method	transparent gel
<b>pH</b>		4.0 – 4.5
<b>VISCOSITY [cP]</b>	Brookfield LV, spindle 34, speed 6.0 RPM, T: 25°C	1500 – 5000



1. In a main vessel combine ingredients from phase A. Mix until uniform.
2. Add Rosulfan L/PH while mixing. Mix until uniform.
3. Add slowly BioROKAMINA K30B while mixing. Mix until uniform.

# PCC EXOL SA

## Sustainable technologies for new generations



PCC EXOL SA is a company that combines cutting-edge technologies with rich experience in production of surfactants (surface active agents). The company is located in Brzeg Dolny (Poland), where anionic, nonionic and amphoteric surfactant production plants have been launched. Due to the flexible production processes, the company offers a wide spectrum of surfactants and industrial formulations, which are often suited for the individual customers operating in plenty of various industry sectors. As one of the leading surfactant manufacturers, PCC EXOL SA carries out new investment projects and implements innovative technologies based on the global sustainability trends.

PCC EXOL SA portfolio includes surfactants with a broad range of applications. Besides of the mass production for personal care and detergents industry, the substances produced by PCC EXOL SA also include specialized products used in various branches, such as textile, agrochemical, metal cleaning, oil drilling, building & construction, paints & coatings, paper industry, extraction & drilling, and many others. The company comprehensive portfolio is continuously enriched with new innovative products, which meet even the strictest market requirements and adapt to the individual needs of customers. This is possible due to the dynamic development of the research facili-



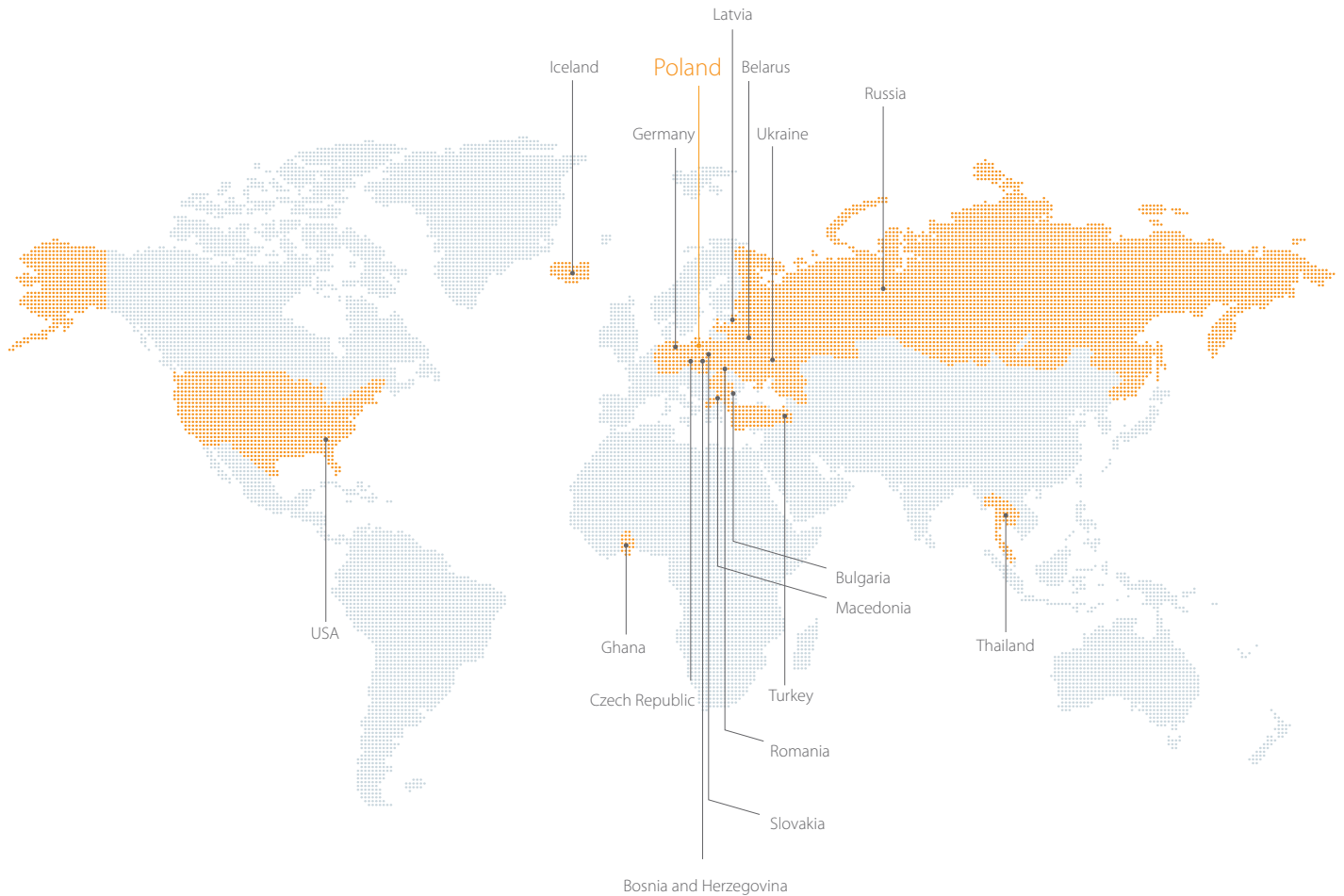
PCC EXOL SA combines innovative technologies with experience in designing, producing and selling surfactants and chemical formulations

ties, flexible production, knowledge as well as experienced personnel.

PCC EXOL SA has the key competence necessary for a worldwide production of surfactants. The ongoing projects will soon bring the new opportunities for the company's further development and expansion into new markets. The company offers not only a wide portfolio and professional servicing but most of all flexible production and comprehensive system solutions that meet individual customer demands. The strategic PCC EXOL SA investor is PCC SE, operating on international markets of the chemical raw materials, transport, energy, coal,

coke, petrol, plastics and metallurgy. PCC SE includes 82 companies operating in 41 different locations in 18 countries.

# PCC Group in the world



## PCC Rokita SA

**PCC Rokita Capital Group, 30 companies, including:**

**PCC Rokita S.A.**

- PCC Prodex sp. z o.o.
- PCC Prodex GmbH (Germany)
- PCC PU sp. z o.o.
- IRPC PCC Co. Ltd. (Thailand)
- PCC Therm sp. z o.o.

## PCC EXOL SA

**PCC EXOL Capital Group, 5 companies, including:**

**PCC EXOL SA**

- PCC Chemax Inc. (the USA)
- PCC EXOL Kimya Sanayi Ve Ticaret Limited Şirketi (Turkey)

## PCC CP Kosmet sp. z o.o.

**Capital Group PCC CP Kosmet, 3 companies, including:**

**PCC CP Kosmet Sp. z o.o.**

- OOO PCC Consumer Products Navigator (Belarus)
- OOO PCC Consumer Products (Russia)

## PCC MCAA sp. z o.o.

## PCC Autochem sp. z o.o.

## PCC Intermodal SA





In accordance with our environmental concerns, this publication from the PCC Group was printed on Cocoon Silk - ecological double-sided-coated matt paper. This paper is made of 100% waste paper using an environmentally friendly technology. The FSC® Certificate confirms that the raw materials used in the paper production process come from well-managed forests or other certified and controlled sources.

### TEXT PAGES

Brand	Cocoon Silk
Grammage	150
Number of pages	20

### COVER PAGES

Brand	Cocoon Silk
Grammage	250
Number of pages	4

### PUBLICATION

Size (cm)	21 x 29.7
Quantity	100

By using Cocoon Silk rather than non-recycled paper, the environmental impact was reduced by:



Carbon footprint data evaluated by Labelia Conseil in accordance with the Bilan Carbone® methodology. Calculations are based on a comparison between recycled paper versus virgin fibre paper - according to the latest European BREF data (virgin fibre paper) available.



PCC EXOL SA  
Sienkiewicza St. 4  
56-120 Brzeg Dolny  
Poland

Please visit our capital group business platform:  
[www.products.pcc.eu](http://www.products.pcc.eu)



Information in this catalogue is believed to be accurate and to the best of our knowledge, but should be considered as introductory only. Detailed information about our products is available in TDS and MSDS. Suggestions for product applications are based on the best of our knowledge.

The responsibility for the use of products in conformity or otherwise with the suggested application method and for determining product suitability for your own purposes rests with the user.

All copyright, trademark rights and other intellectual and industrial property rights and the resulting rights to use this publication and its contents have been transferred to PCC EXOL SA or its licensors. All rights reserved.

Users/readers are not entitled to reproduce this publication in whole or in part, nor are they entitled to reproduce it (excluding reproduction for personal use) or to transfer it to third parties.

Permission to reproduce it for personal use does not apply in respect to data used in other publications, in electronic information systems, or in other media publications. PCC EXOL SA-- shall not be responsible for data published by users.

**pcc**  
Exol