



PAINTS AND COATINGS  
**PAINTS**

## INTUMESCENT WB PAINT



# INTUMESCENT WB PAINT

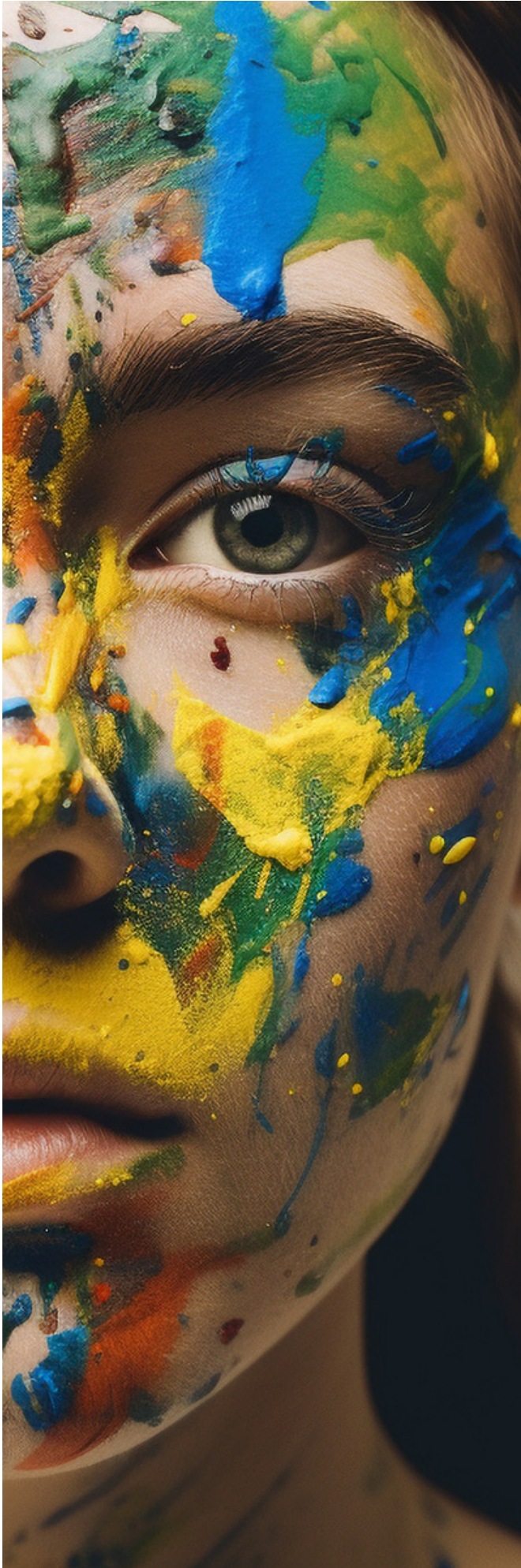
	INGREDIENT	CONCENTRATION [%]
1	Water	25.95
2	Hydroxyethylcellulose	0.05
3	EXOdis PC540i	0.60
4	EXOdis PC416	0.20
5	Defoamer	0.30
6	Titanium white	7.00
7	APP	22.00
8	Pentaerythritol	8.00
9	Melamine	8.00
10	Hydrophilic fumed silica	0.10
11	Osakryl OB	25.00
12	Coalescent	1.50
13	Roflam B7L	1.00
14	Biocide	0.10
15	Defoamer	0.20



Viscosity	Brookfield, S64, 20rpm	11300 mPa·s
Adhesion	ISO 2409	1
Fire test	Internal	pass

## Procedure:

1. Dissolve hydroxyethylcellulose in water. Add components 2–5.
2. Add components 6–10 slowly, while agitating, and mix until a homogeneous liquid is obtained.
3. Grind until the desired fineness is achieved.
4. Add components 11–15 to the pigment slurry and mix until a homogeneous liquid is obtained.



The information in the catalogue is believed to be accurate and to the best of our knowledge, but should be considered as introductory only. Detailed information about products is available in TDS and MSDS. Suggestions for product applications are based on our the best of our knowledge.

The responsibility for the use of products in conformity or otherwise with the suggested application and for determining product suitability for your own purposes rests with the user.

All copyright, trademark rights and other intellectual and industrial property rights and the resulting rights to use this publication and its contents have been transferred to PCC Rokita SA, PCC EXOL SA and other companies of the PCC Group or its licensors. All rights reserved.

Users/readers are not entitled to reproduce this publication in whole or in part, nor are they entitled to reproduce it (excluding reproduction for personal use) or to transfer it to third parties.

Permission to reproduce it for personal use does not apply in respect to data used in other publications, in electronic information systems, or in other media publications. PCC Rokita SA and PCC EXOL SA shall not be responsible for data published by users.

Please visit our capital group business platform to check full range of products for paints and coatings.

[www.products.pcc.eu](http://www.products.pcc.eu)

PCC Group  
Sienkiewicza 4  
56-120 Brzeg Dolny  
Poland

e-mail: [products@pcc.eu](mailto:products@pcc.eu)

