



PAINTS AND COATINGS
PAINTS

DTM WB PAINT



DTM WB PAINT

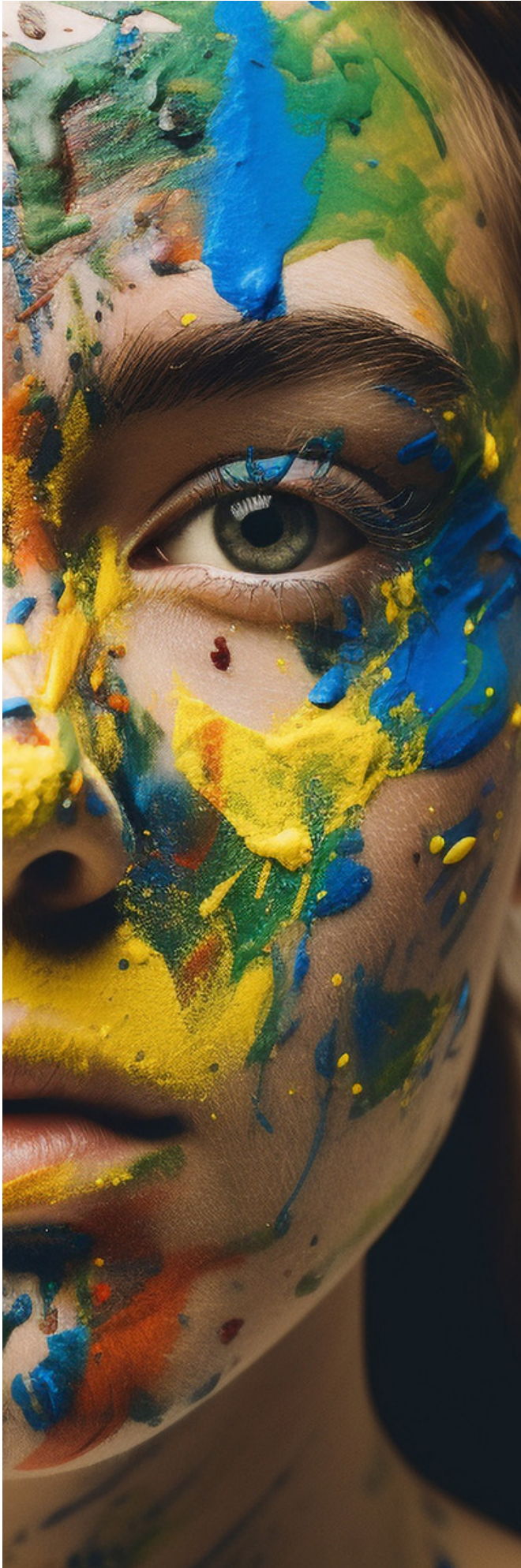
	INGREDIENT	CONCENTRATION [%]
1	Water	6.0
2	EXOdis PC540a	0.8
3	ROKAdis 900A/25	0.8
4	Defoamer	0.3
5	Titanium white	16.0
6	Luzenac 0	7.0
7	Hydrophilic fumed silica	0.2
8	EXOhib PC108	1.6
9	Water	5.0
10	Alberdingk AC 2403	55.0
11	Coalescent	2.2
12	Surface wetting agent	0.2
13	EXOhib PC500	0.4
14	HEUR additive I (50% solution)	4.0
15	HEUR additive II (50% solution)	0.1
16	Biocide	0.1
17	Defoamer	0.3



Viscosity	Brookfield, S64, 20rpm	3300 mPa·s
Adhesion after 48h of Machu test*	ISO 2409	0
Adhesion before Machu test*	ISO 2409	0
Blistering after 48h of Machu test*	ISO 4628-2	3-3 (S3), disappear after 24h
Rust after 48h of Machu test*	ISO 4628-3	Ri 0

Procedure:

1. Mix components 1–4.
2. Add components 5–7 slowly, while agitating, and mix until a homogeneous liquid is obtained.
3. Grind until the desired fineness is achieved.
4. Add components 8–17 to the pigment slurry and mix until a homogeneous liquid is obtained.
5. * Samples of the coatings, applied on steel plates, were immersed for 48 hours at 40°C in a Machu solution (50g NaCl, 10g of acetic acid, and 5g of 30% H₂ O₂ dissolved in 1L of distilled water). 24 hours of the Machu test typically correspond to 500 hours of salt spray test.



The information in the catalogue is believed to be accurate and to the best of our knowledge, but should be considered as introductory only. Detailed information about products is available in TDS and MSDS. Suggestions for product applications are based on our the best of our knowledge.

The responsibility for the use of products in conformity or otherwise with the suggested application and for determining product suitability for your own purposes rests with the user.

All copyright, trademark rights and other intellectual and industrial property rights and the resulting rights to use this publication and its contents have been transferred to PCC Rokita SA, PCC EXOL SA and other companies of the PCC Group or its licensors. All rights reserved.

Users/readers are not entitled to reproduce this publication in whole or in part, nor are they entitled to reproduce it (excluding reproduction for personal use) or to transfer it to third parties.

Permission to reproduce it for personal use does not apply in respect to data used in other publications, in electronic information systems, or in other media publications. PCC Rokita SA and PCC EXOL SA shall not be responsible for data published by users.

Please visit our capital group business platform to check full range of products for paints and coatings.

www.products.pcc.eu

PCC Group
Sienkiewicza 4
56-120 Brzeg Dolny
Poland

e-mail: products@pcc.eu

